

IN-SCHOOL PROGRAM

358 TOTAL HIGH SCHOOL STUDENTS



62% FEMALE • 36% MALE
2% OTHER



100% GRADUATION RATE

46% African-American/Black

42% Latinx

9% Caucasian/White

3% Asian

72 Graduating Seniors

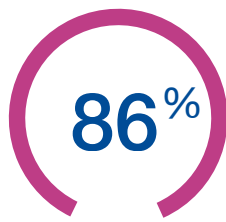
354 College Applications

58 Accepted 4 Or More

100% Acceptance Rate



LOW-INCOME



1ST-GENERATION



\$1.8 MILLION

Scholarship dollars secured.

CENTER-BASED PROGRAM

African-American/Black

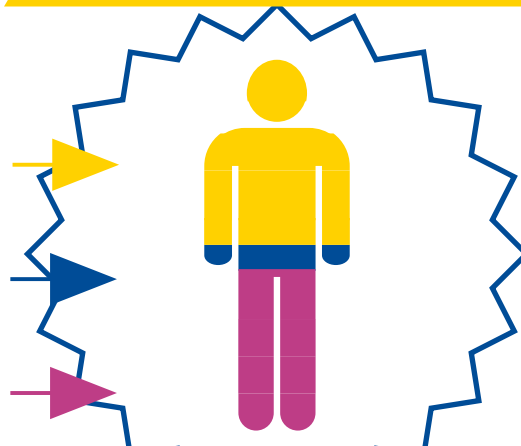
48%

Caucasian/White

9%

Latinx

42%



175 TOTAL PARTICIPANTS



75 MALES • 51 FEMALES • 1 OTHER
AGES 16-25

276 HOURS HSE PREP TIME

72



participants enrolled in vocational training, college, or full-time employment

66



participants took part in job-readiness training

43



participants attained a credential